

TOWN OF LINCOLN
BID SPECIFICATIONS
GRANITE CURB
RFP 2010-21

SPECIFICATIONS

All granite curbing shall conform to RIDOT Standard Specifications and details see RI Standard Details 7.3.0 through 7.3.8.

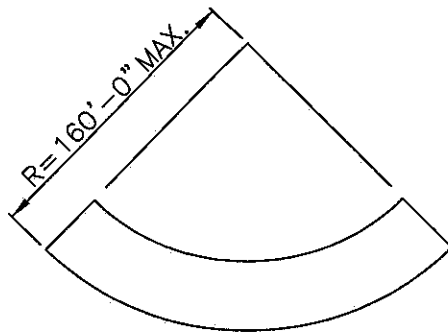
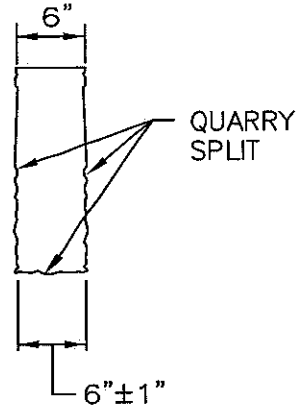
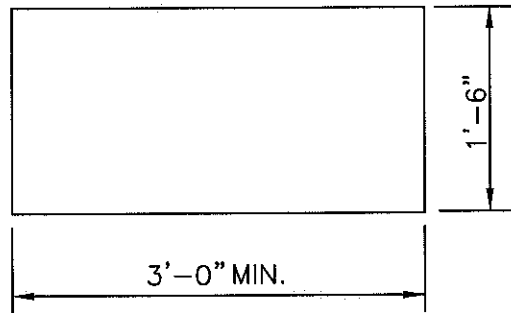
May 2010

GRANITE CURB
BID SHEET
RFP 2010-21

NAME OF COMPANY _____

GRANITE CURBING

STRAIGHT	\$ _____ PER LF
CIRCULAR	\$ _____ PER LF
3 FOOT TRANSITION	\$ _____ EACH
6 FOOT TRANSITION	\$ _____ EACH
TRANSITION WHEEL CHAIR RAMP	\$ _____ EACH
2 FOOT RADIUS CORNER	\$ _____ EACH
INLET STONE FOR SQUARE CATCH BASIN	\$ _____ EACH
INLET STONE FOR ROUND CATCH BASIN	\$ _____ EACH
APRON STONE FOR SQUARE CATCH BASIN	\$ _____ EACH
APRON STONE FOR ROUND CATCH BASIN	\$ _____ EACH






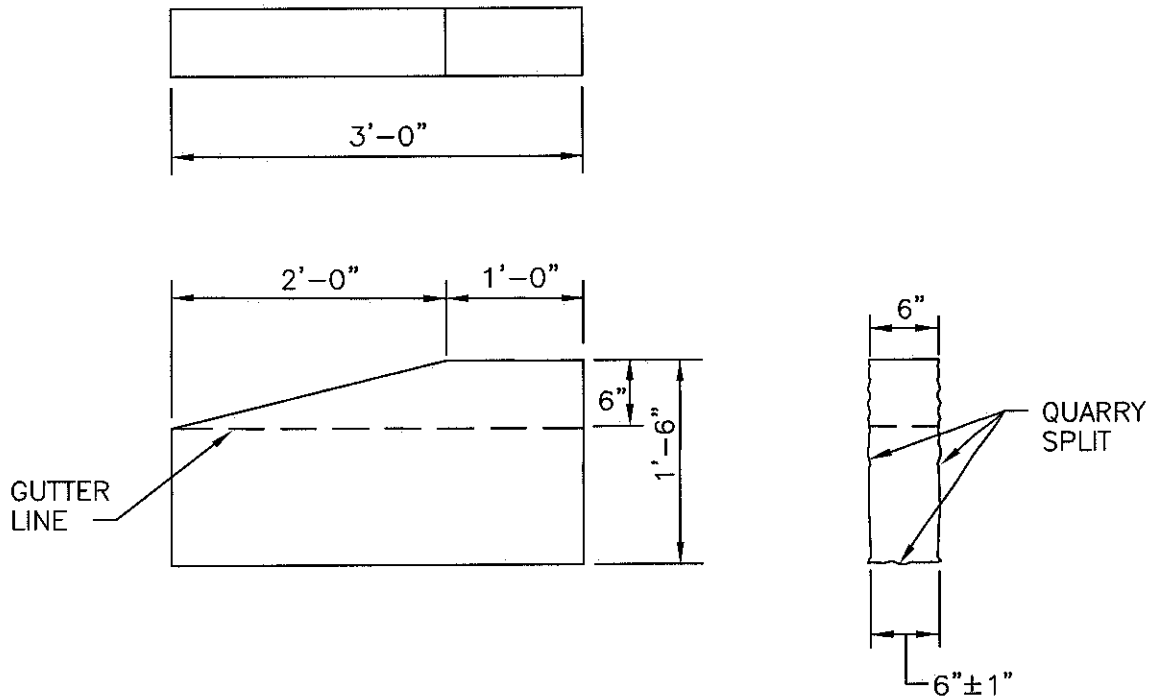
CIRCULAR CURB

NOTES:

1. SHALL BE IN ACCORDANCE WITH SECTION 906 OF THE R.I. STANDARD SPECIFICATIONS.
2. TOP SURFACE TO BE DRESSED BY SAW. REMAINDER TO BE QUARRY SPLIT.
3. MINIMUM LENGTH OF STRAIGHT OR CIRCULAR PIECES TO BE 3'-0".
4. CIRCULAR CURB IS REQUIRED ON CURVES WITH RADII OF 160'-0" OR LESS. STRAIGHT CURB TO BE USED ON CURVES OF MORE THAN 160'-0" RADIUS.

RHODE ISLAND DEPARTMENT OF TRANSPORTATION

REVISIONS			GRANITE CURB		
NO.	BY	DATE			
1	MLP	Mar 05			
			 CHIEF ENGINEER TRANSPORTATION	 CHIEF DESIGN ENGINEER TRANSPORTATION	JUNE 15, 1998 ISSUE DATE



NOTES:

1. SHALL BE IN ACCORDANCE WITH SECTION 906 OF THE R.I. STANDARD SPECIFICATIONS.
2. TOP SURFACE TO BE DRESSED BY SAW. REMAINDER TO BE QUARRY SPLIT.

RHODE ISLAND DEPARTMENT OF TRANSPORTATION

REVISIONS		
NO.	BY	DATE
1	MLP	Mar 05

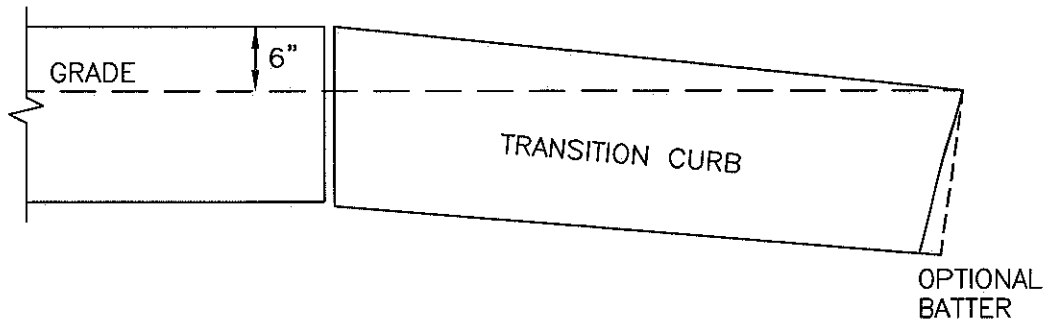
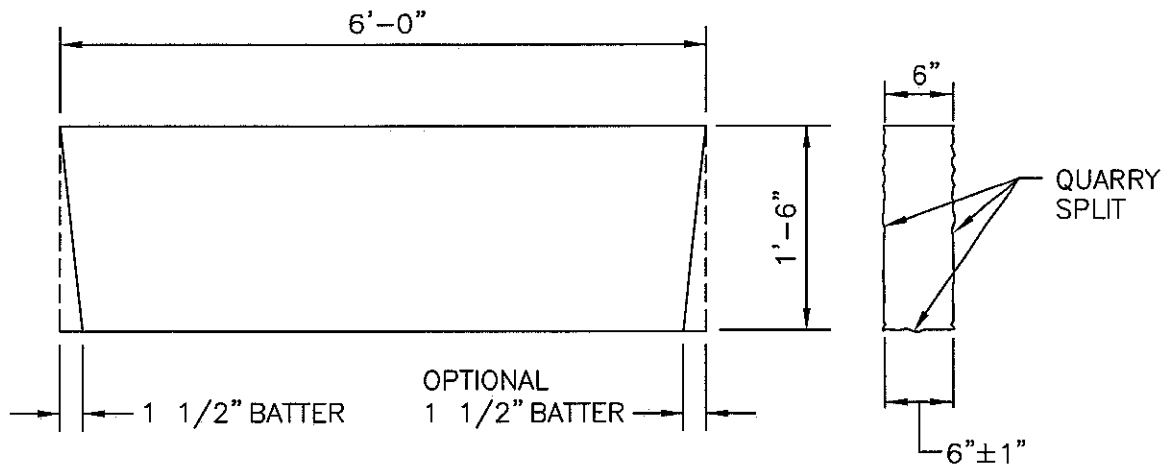
3'-0" GRANITE TRANSITION CURB

James A. Capaldi
 CHIEF ENGINEER
 TRANSPORTATION

Edmund J. Renshaw
 CHIEF DESIGN ENGINEER
 TRANSPORTATION

JUNE 15, 1998
 ISSUE DATE





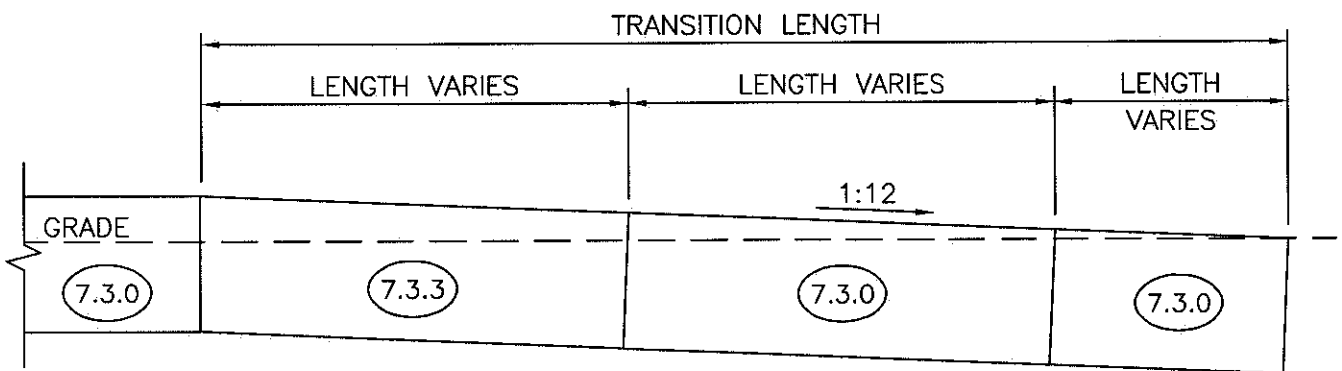
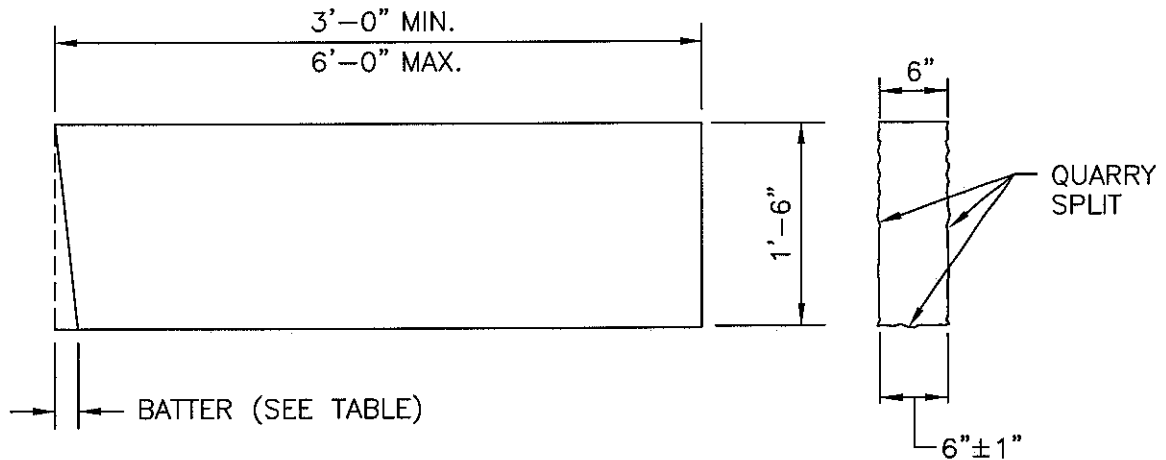


NOTES:

1. SHALL BE IN ACCORDANCE WITH SECTION 906 OF THE R.I. STANDARD SPECIFICATIONS.
2. THE CONTRACTOR MAY CUT EXISTING CURB SECTIONS AS REQUIRED TO MEET THIS DETAIL AND THE R.I. STANDARD SPECIFICATIONS, WHERE OLD CURBING IS BEING REUSED.
3. TOP SURFACE TO BE DRESSED BY SAW. REMAINDER TO BE QUARRY SPLIT.

RHODE ISLAND DEPARTMENT OF TRANSPORTATION

REVISIONS			6'-0" GRANITE TRANSITION CURB	R.I. STANDARD 7.3.2
NO.	BY	DATE		
1	MLP	Mar 05		
			 CHIEF ENGINEER TRANSPORTATION	 CHIEF DESIGN ENGINEER TRANSPORTATION
				JUNE 15, 1998 ISSUE DATE



TRANSITION LENGTH (FT.)	BATTER (IN.)
6.0	1.5
7.0	1.3
8.0	1.2
9.5	1.0
11.5	0.8
15.0	0.6
18.0	0.5

NOTES:

1. SHALL BE IN ACCORDANCE WITH SECTION 906 OF THE R.I. STANDARD SPECIFICATIONS.
2. THE CONTRACTOR MAY CUT EXISTING CURB SECTIONS AS REQUIRED TO MEET THIS DETAIL AND THE R.I. STANDARD SPECIFICATIONS, WHERE OLD CURBING IS BEING REUSED.
3. MINIMUM LENGTH OF STRAIGHT OR CIRCULAR CURB FILLER PIECES TO BE 3'-0" (GREATER LENGTHS PREFERRED).
4. TOP SURFACE TO BE DRESSED BY SAW. REMAINDER TO BE QUARRY SPLIT.

RHODE ISLAND DEPARTMENT OF TRANSPORTATION

**GRANITE WHEELCHAIR RAMP
TRANSITION CURB**

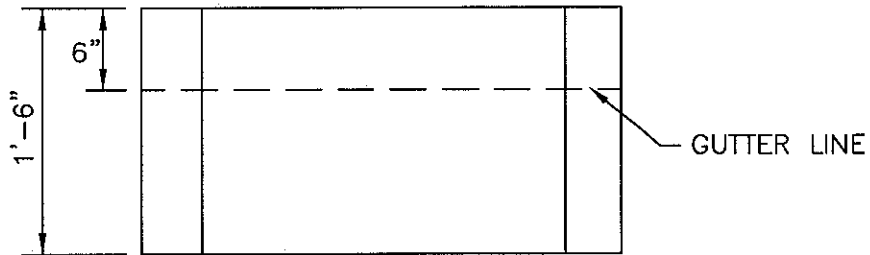
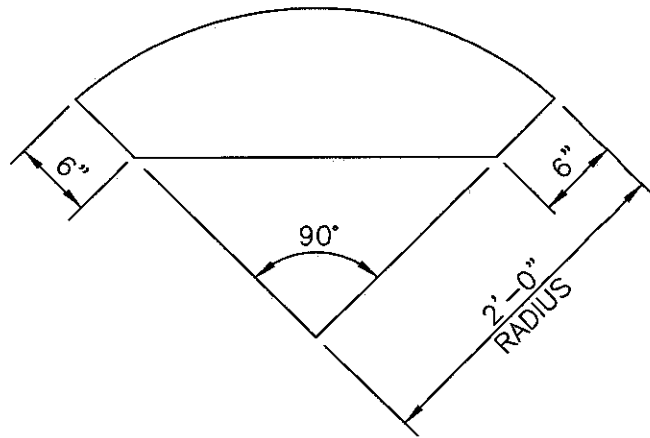
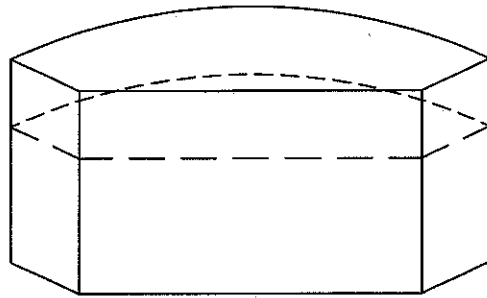
REVISIONS		
NO.	BY	DATE
1	MLP	Mar 05

James R. Capaldi
CHIEF ENGINEER
TRANSPORTATION

Edmund D. Parker Jr.
CHIEF DESIGN ENGINEER
TRANSPORTATION

JUNE 15, 1998
ISSUE DATE





NOTES:

1. SHALL BE IN ACCORDANCE WITH SECTION 906 OF THE R.I. STANDARD SPECIFICATIONS.
2. TOP SURFACE TO BE DRESSED BY SAW. REMAINDER TO BE QUARRY SPLIT.

RHODE ISLAND DEPARTMENT OF TRANSPORTATION

REVISIONS		
NO.	BY	DATE
1	MLP	Mar 05

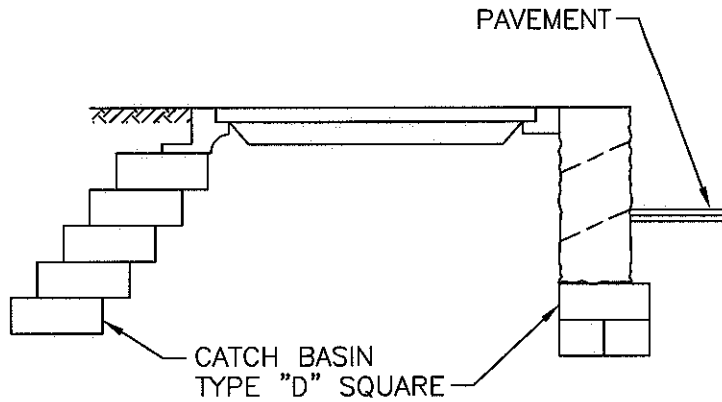
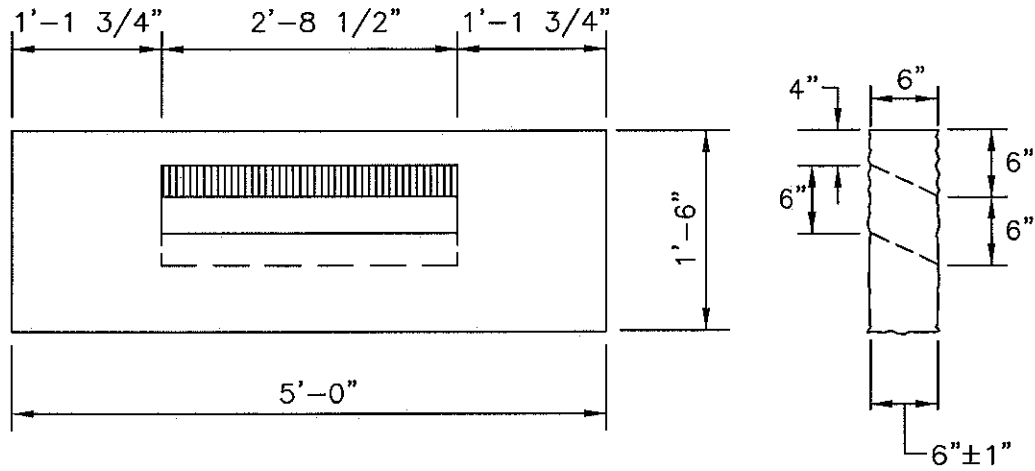
GRANITE 2'-0" RADIUS CORNER

James R. Casaldi
 CHIEF ENGINEER
 TRANSPORTATION

Edmund J. Parkes Jr.
 CHIEF DESIGN ENGINEER
 TRANSPORTATION

JUNE 15, 1998
 ISSUE DATE





NOTES:

1. SHALL BE IN ACCORDANCE WITH SECTION 906 OF THE R.I. STANDARD SPECIFICATIONS.
2. TOP SURFACE TO BE DRESSED BY SAW. REMAINDER TO BE QUARRY SPLIT.

RHODE ISLAND DEPARTMENT OF TRANSPORTATION

**GRANITE INLET STONE
(FOR SQUARE CATCH BASIN)**

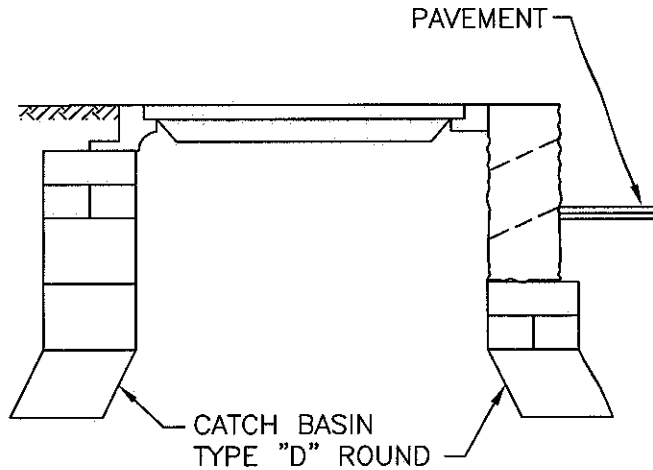
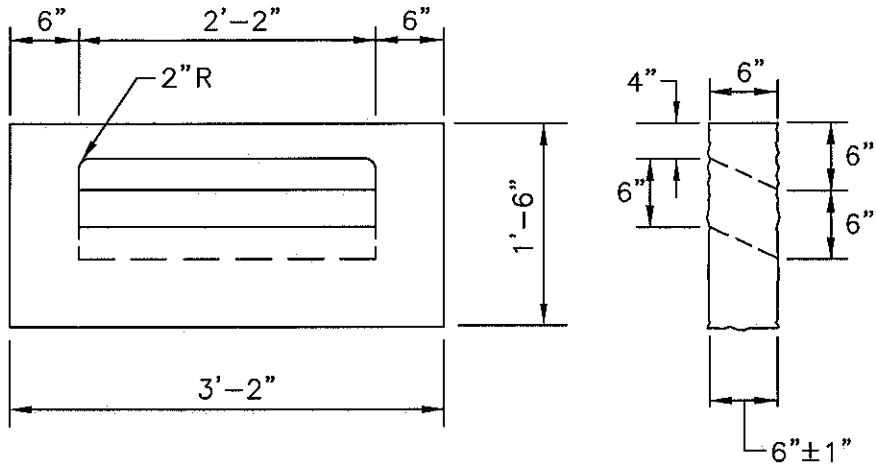
REVISIONS		
NO.	BY	DATE
1	MLP	Mar 05

James A. Capaldi
CHIEF ENGINEER
TRANSPORTATION

Edmund J. Parker Jr.
CHIEF DESIGN ENGINEER
TRANSPORTATION

JUNE 15, 1998
ISSUE DATE





NOTES:

1. SHALL BE IN ACCORDANCE WITH SECTION 906 OF THE R.I. STANDARD SPECIFICATIONS.
2. TOP SURFACE TO BE DRESSED BY SAW. REMAINDER TO BE QUARRY SPLIT.

RHODE ISLAND DEPARTMENT OF TRANSPORTATION

**GRANITE INLET STONE
(FOR ROUND CATCH BASIN)**

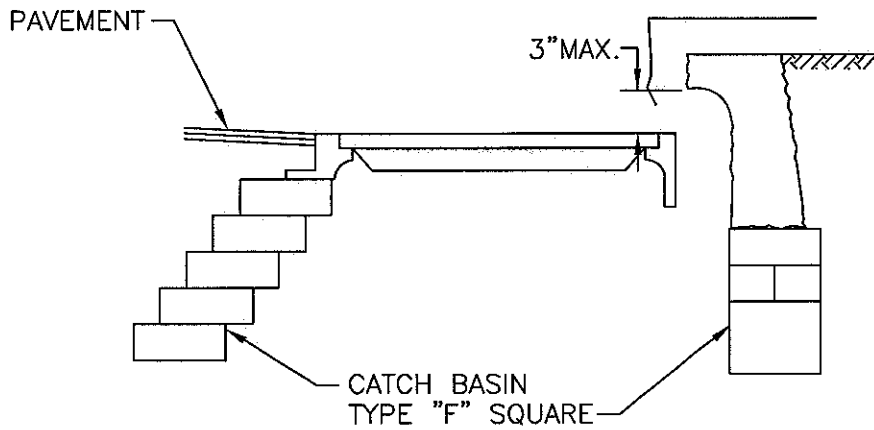
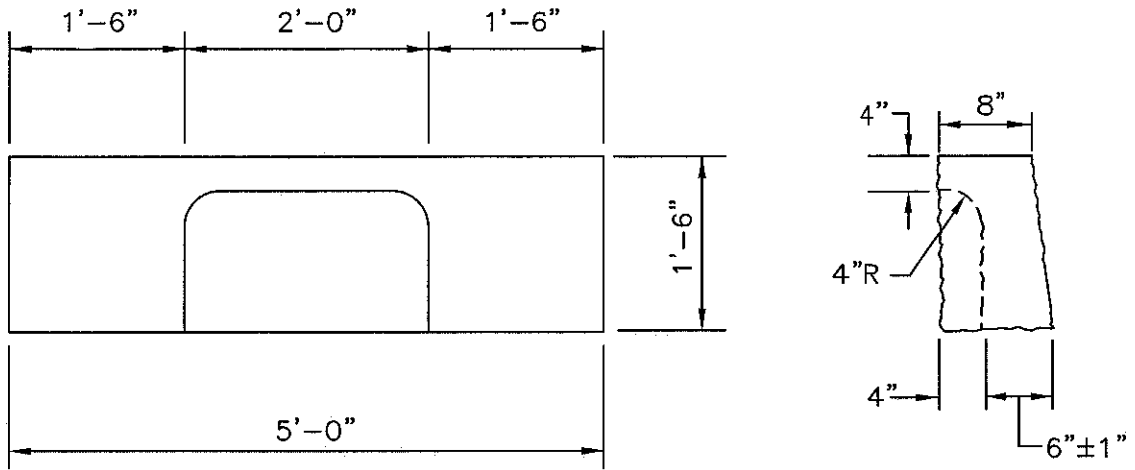
REVISIONS		
NO.	BY	DATE
1	MLP	Mar 05

James A. Casaldi
CHIEF ENGINEER
TRANSPORTATION

Edmund D. Parker Jr.
CHIEF DESIGN ENGINEER
TRANSPORTATION

JUNE 15, 1998
ISSUE DATE





NOTES:

1. SHALL BE IN ACCORDANCE WITH SECTION 906 OF THE R.I. STANDARD SPECIFICATIONS.
2. TOP SURFACE TO BE DRESSED BY SAW. REMAINDER TO BE QUARRY SPLIT.

RHODE ISLAND DEPARTMENT OF TRANSPORTATION

**GRANITE APRON STONE
(FOR SQUARE CATCH BASIN)**

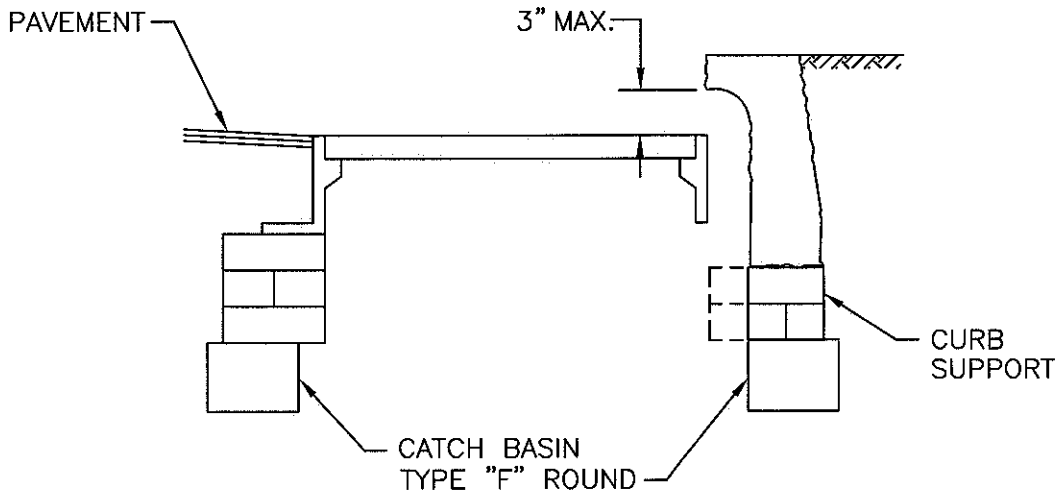
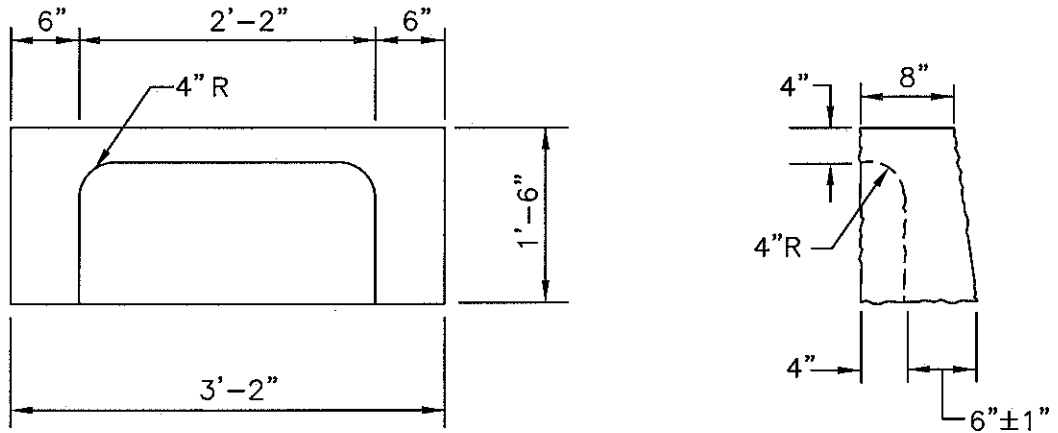
REVISIONS		
NO.	BY	DATE
1	MLP	Mar 05

James R. Casaldi
 CHIEF ENGINEER
 TRANSPORTATION

Edmund J. Parker Jr.
 CHIEF DESIGN ENGINEER
 TRANSPORTATION

JUNE 15, 1998
 ISSUE DATE





NOTES:

1. SHALL BE IN ACCORDANCE WITH SECTION 906 OF THE R.I. STANDARD SPECIFICATIONS.
2. TOP SURFACE TO BE DRESSED BY SAW. REMAINDER TO BE QUARRY SPLIT.

RHODE ISLAND DEPARTMENT OF TRANSPORTATION

**GRANITE APRON STONE
(FOR ROUND CATCH BASIN)**

REVISIONS		
NO.	BY	DATE
1	MLP	Mar 05

James R. Capaldi
 CHIEF ENGINEER
 TRANSPORTATION

Edmund J. Parker Jr.
 CHIEF DESIGN ENGINEER
 TRANSPORTATION

JUNE 15, 1998
 ISSUE DATE

